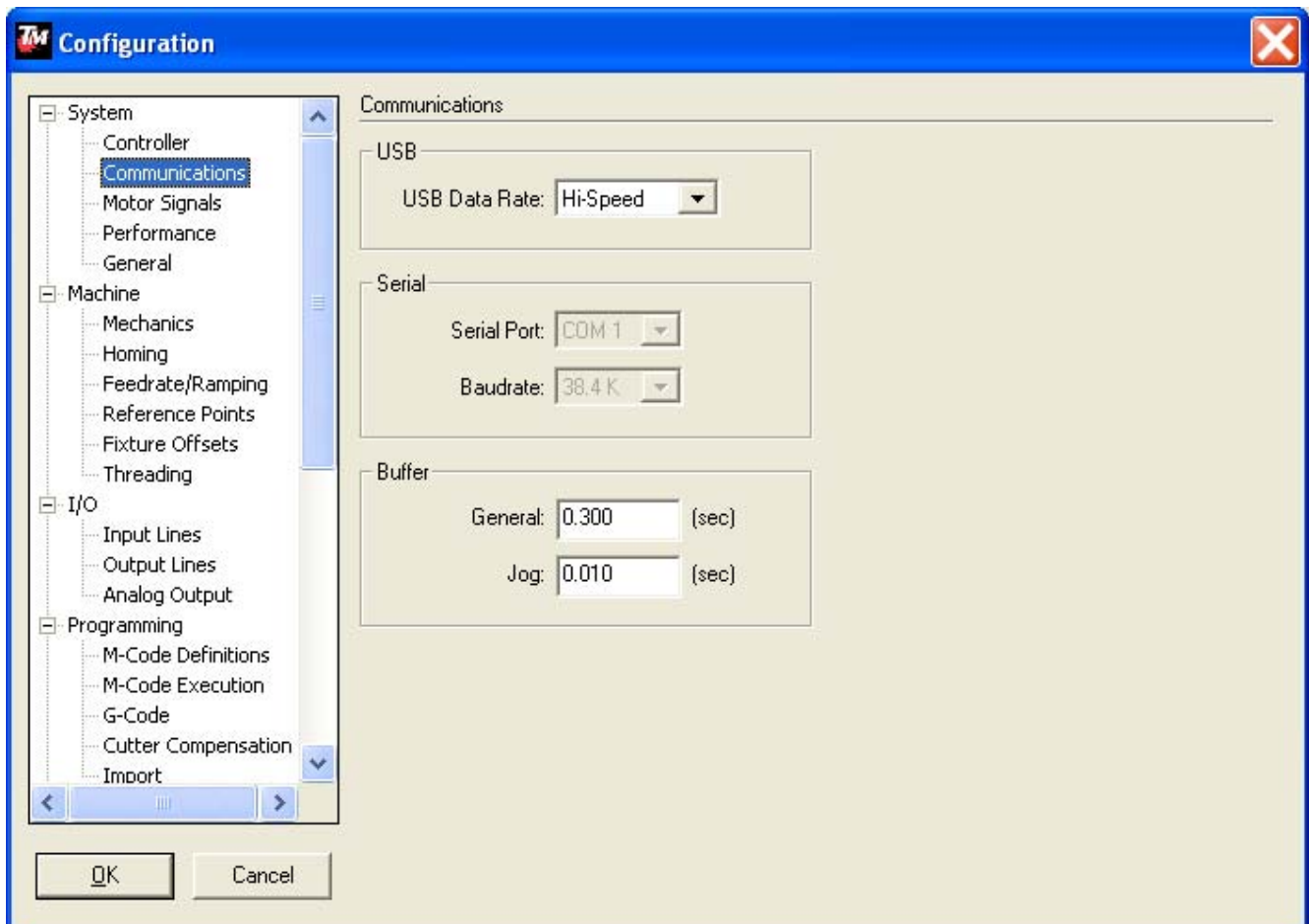
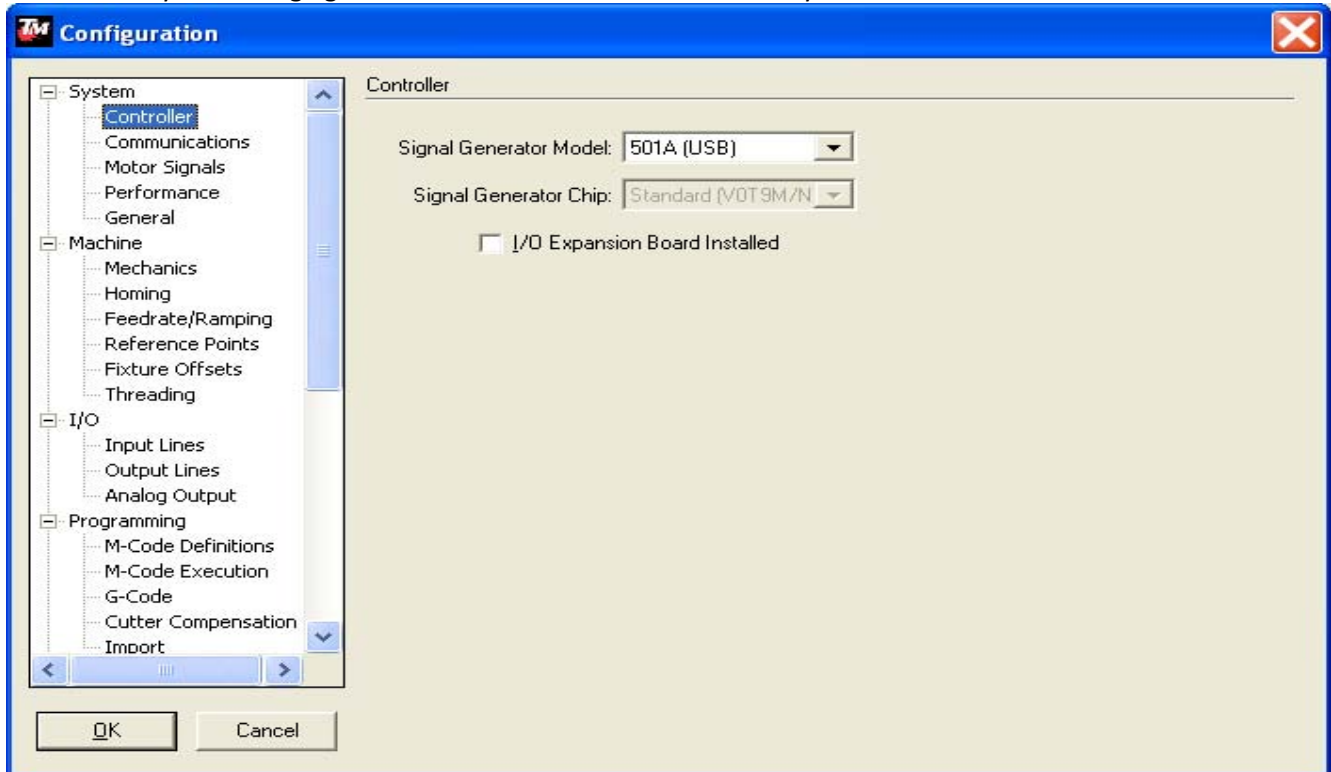
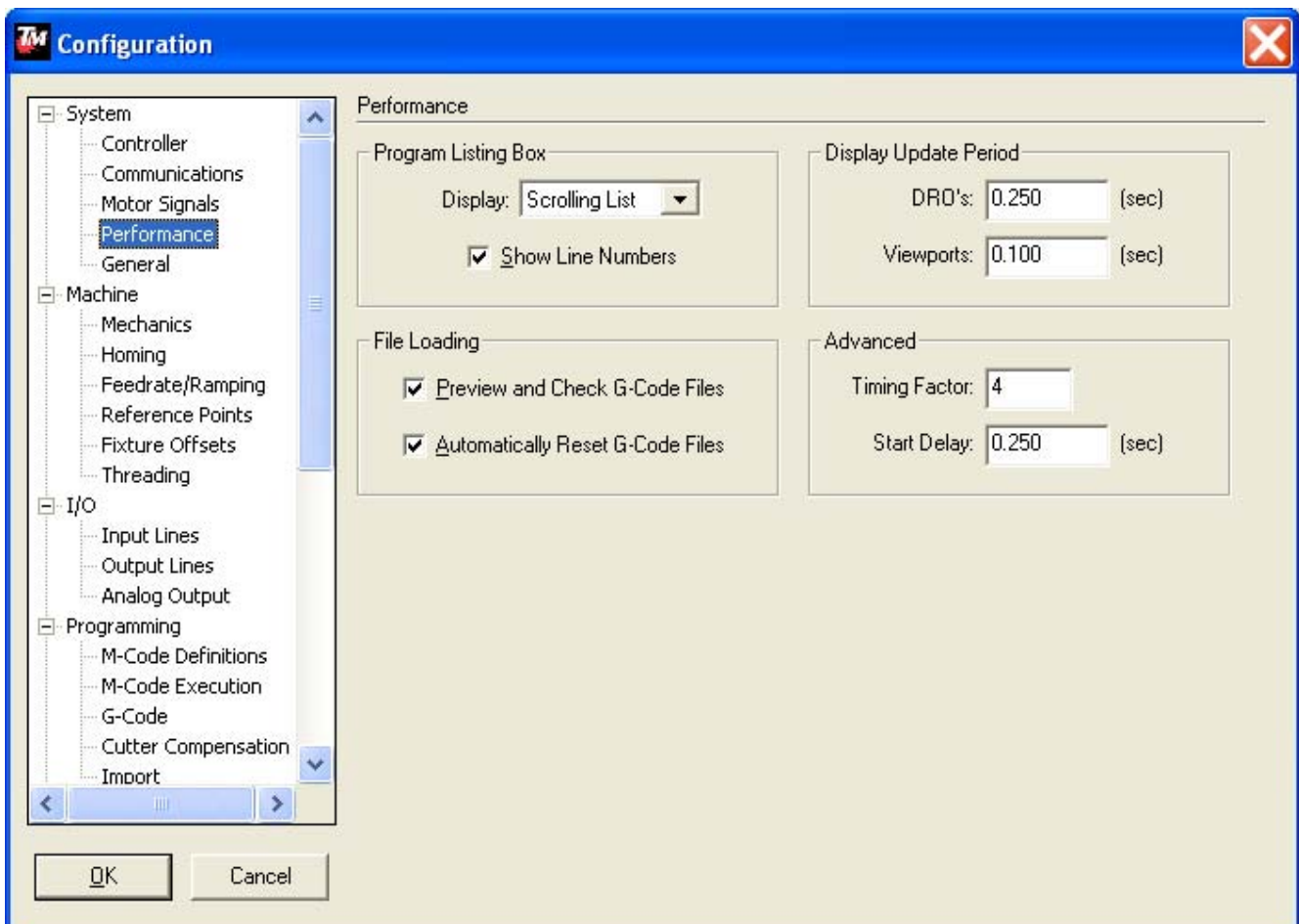
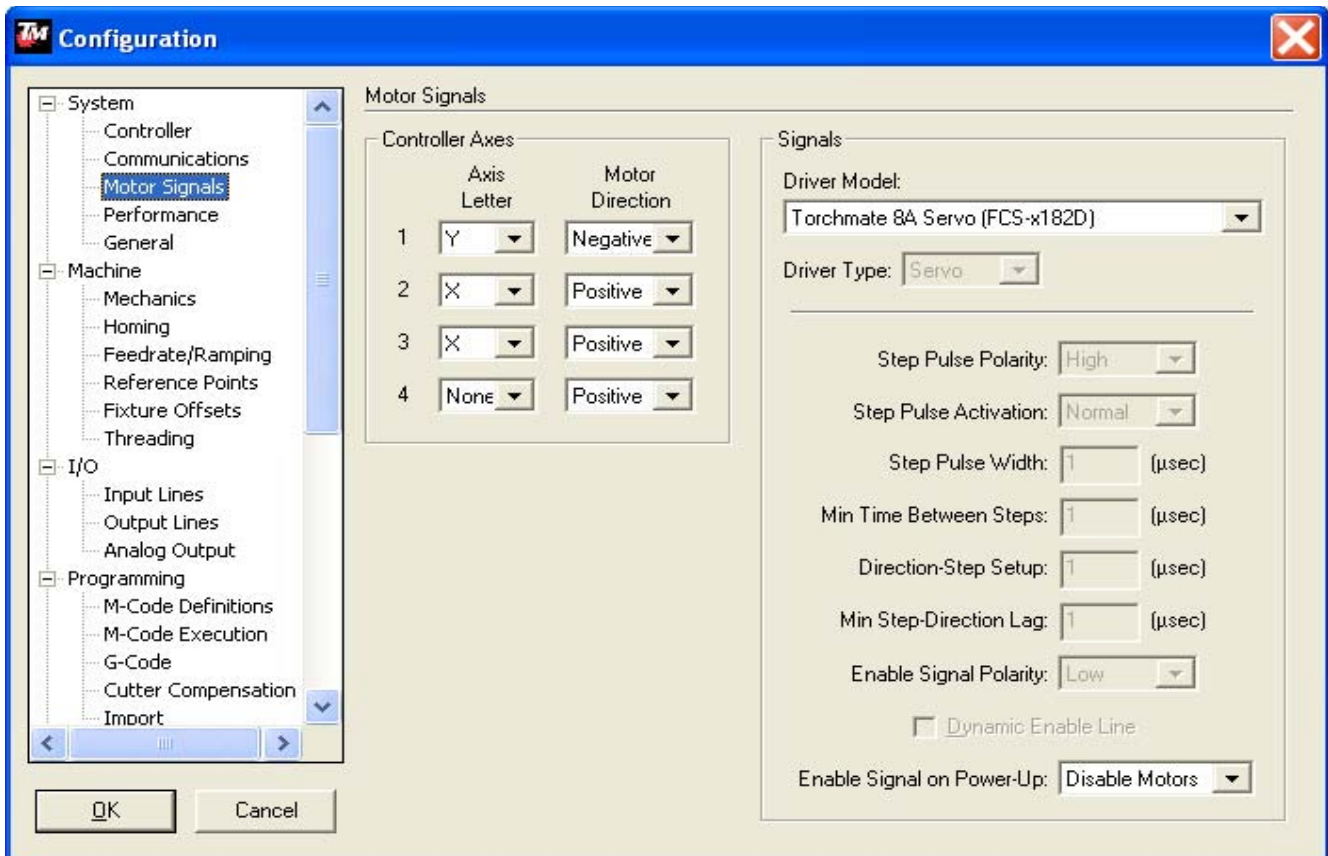
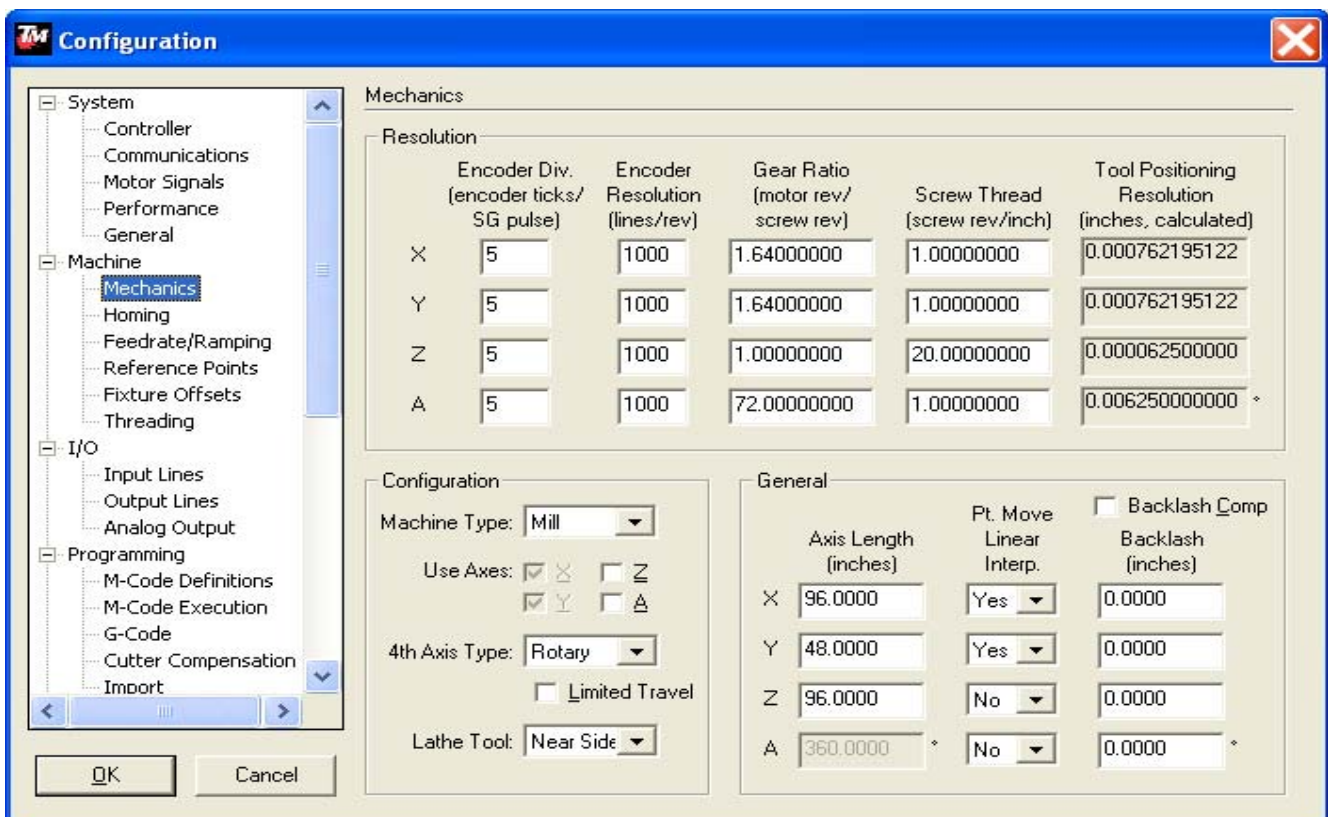
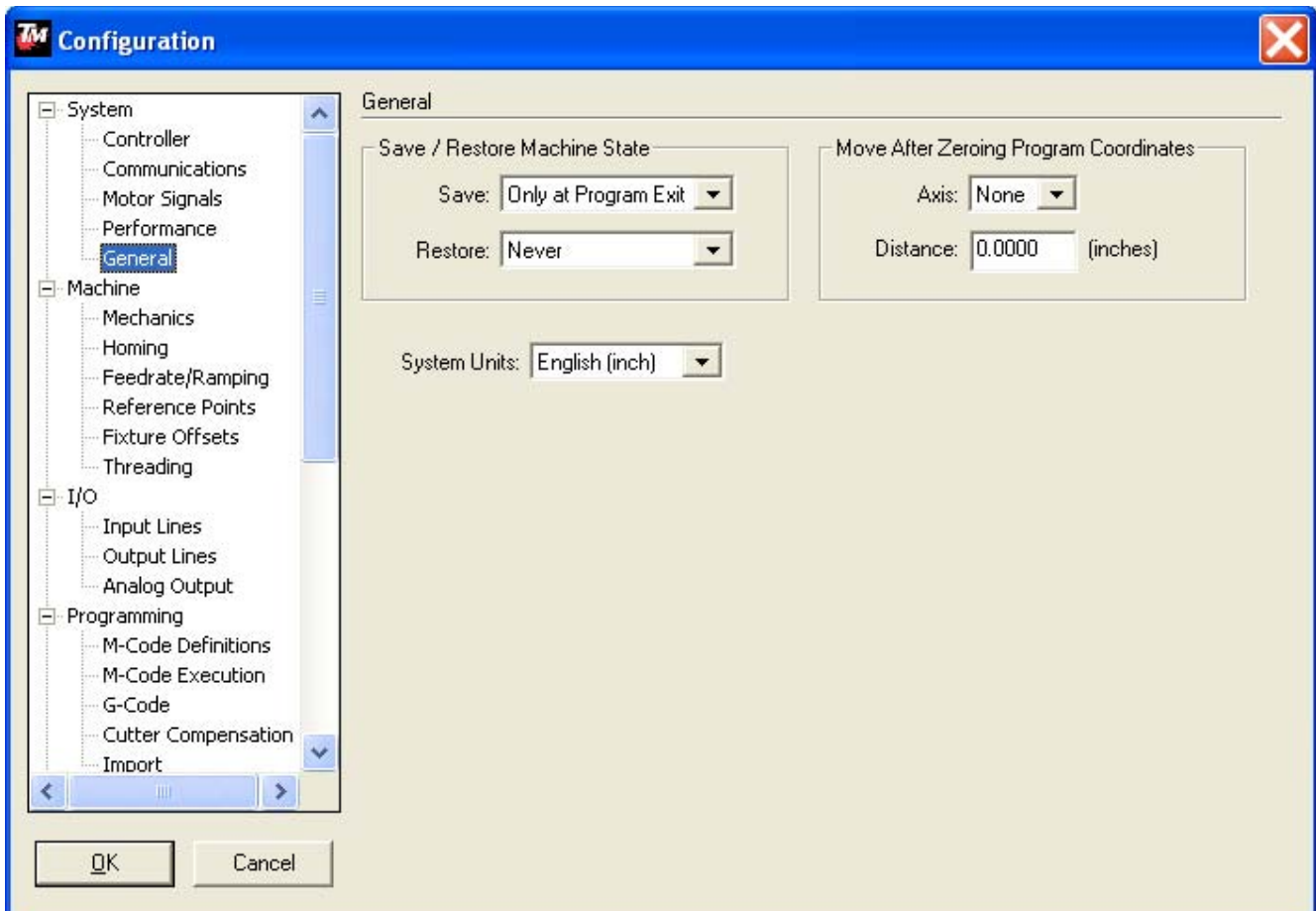


Servo Setup Pages.

Please check your setting against these and let me know where they are different







Configuration

- System
 - Controller
 - Communications
 - Motor Signals
 - Performance
 - General
- Machine
 - Mechanics
 - Homing
 - Feedrate/Ramping
 - Reference Points
 - Fixture Offsets
 - Threading
- I/O
 - Input Lines
 - Output Lines
 - Analog Output
- Programming
 - M-Code Definitions
 - M-Code Execution
 - G-Code
 - Cutter Compensation
 - Import

Feedrate/Ramping

Axis Settings

	Start/Stop Feedrate (in/min)	Maximum Feedrate (in/min)	Ramping Rate (in/sec ²)	Direction Change Delay (sec)	Continuous Contouring Feedrate Tol. (in/min)
X	<input type="text" value="35.00"/>	<input type="text" value="1000.00"/>	<input type="text" value="18.00"/>	<input type="text" value="0.010"/>	<input type="text" value="70.00"/>
Y	<input type="text" value="35.00"/>	<input type="text" value="1000.00"/>	<input type="text" value="18.00"/>	<input type="text" value="0.010"/>	<input type="text" value="70.00"/>
Z	<input type="text" value="10.00"/>	<input type="text" value="20.00"/>	<input type="text" value="1.00"/>	<input type="text" value="0.010"/>	<input type="text" value="15.00"/>
A	<input type="text" value="360.00"/> */min	<input type="text" value="1440.00"/> */min	<input type="text" value="100.00"/>	<input type="text" value="0.000"/>	<input type="text" value="360.00"/> */min

General

Max Arc Feedrate: (in/min)

Pt. Feedrate - Linear: (in/min)

Pt. Feedrate - Rotary: (*/min)

OK
Cancel

Configuration

- System
 - Controller
 - Communications
 - Motor Signals
 - Performance
 - General
- Machine
 - Mechanics
 - Homing
 - Feedrate/Ramping
 - Reference Points
 - Fixture Offsets
 - Threading
- I/O
 - Input Lines
 - Output Lines
 - Analog Output
- Programming
 - M-Code Definitions
 - M-Code Execution
 - G-Code
 - Cutter Compensation
 - Import

Input Lines

Line #	Function	Location	Description	Wiring	Sensing Debounce (inches)
1	Control	N/A	OK to Move	N.O.	0.0183
2	Feed Hold	N/A	Feed Hold	N.O.	0.0183
3	Unused	N/A		N.C.	0.0183
4	Unused	N/A		N.C.	0.0183
5	Unused	N/A		N.C.	0.0183
6	Safety	N/A	servo 1	N.C.	0.0183
7	Safety	N/A	servo 2	N.C.	0.0183
8	Safety	N/A	servo 3	N.C.	0.0183
9	Unused	N/A		N.C.	0.0183
10	Unused	N/A		N.C.	0.0183
11	Unused	N/A		N.C.	0.0183
12	Unused	N/A		N.C.	0.0183
13	Unused	N/A		N.C.	0.0183
14	Unused	N/A		N.C.	0.0183
15	Unused	N/A		N.C.	0.0183
16	Unused	N/A		N.C.	0.0183

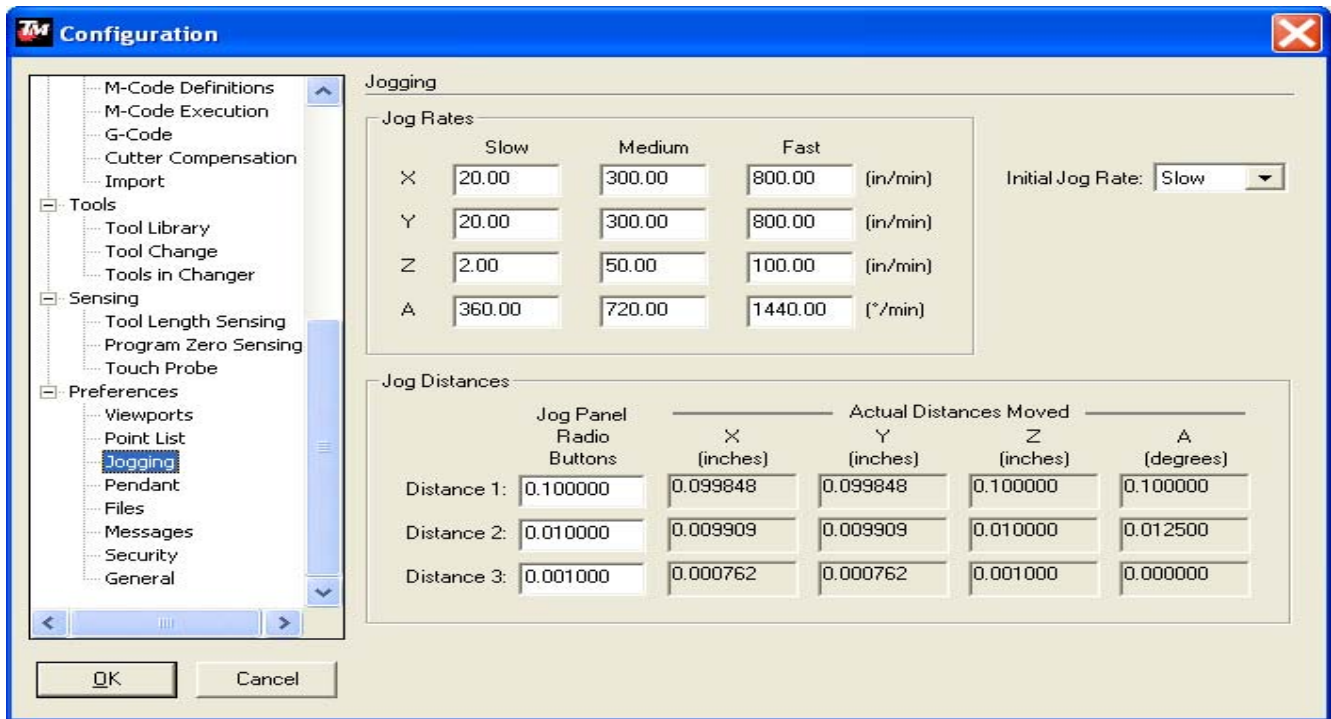
Debounce Factor:

Debounce During Motion: (msec)

Debounce When Idle: (sec)

Set All Wiring:

OK
Cancel



Please write down the setting that you have that are different to those on this document. Please realize that some may be different because of your particular table, but I am most curious about the settings for the Motor Signals, Mechanics, Feedrate/Ramping, and Input pages.